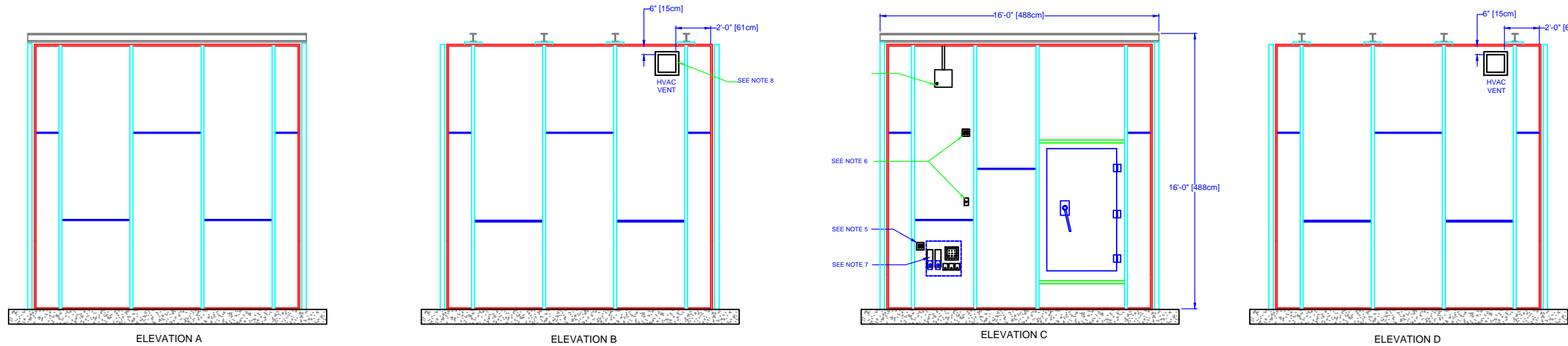


REVISION HISTORY

REV	DESCRIPTION	DATE	APPROVED



NOTES:

GENERAL:

1. TEST CHAMBER OUTSIDE DIMENSIONS ARE 192 X 192 X 192 IN HIGH (488 X 488 X 488 CM HIGH).
2. TEST CHAMBER IS A STAND-ALONE MODULAR SHIELDED CHAMBER LINED WITH RF ANECHOIC MATERIAL. TOTAL SYSTEM WEIGHT IS 15000 LB (6800 KG). MAXIMUM FLOOR LOAD IS 265 LB/SQ FT (1252 KG/SQ M).
3. FLOOR SURFACE BENEATH CHAMBER MUST BE SMOOTH AND FLAT TO WITHIN  $\frac{1}{8}$  IN OVER 10 FT (3 MM OVER 3 M), NON-ACCUMULATING.

ELECTRICAL:

4. TEST CHAMBER MUST BE CONNECTED TO HOST BUILDING ELECTRICAL GROUND. A GROUNDING STUD IS PROVIDED WITH THE CHAMBER AND WILL BE FIELD INSTALLED AT A CONVENIENT LOCATION. CONNECTION TO ELECTRICAL SYSTEM IS BY OTHERS.
5. SYSTEM RF AND CONTROL CABLING IS ROUTED TO THE FRONT OF THE TEST CHAMBER. AN EQUIPMENT RACK OR TABLE IS REQUIRED TO SUPPORT THE SYSTEM CONTROLLER AND RF EQUIPMENT. A DEDICATED 120VAC/20A OR 240VAC/10A CIRCUIT TERMINATING IN A QUAD RECEPTACLE OUTLET IS REQUIRED TO POWER THIS EQUIPMENT. BY OTHERS.

6. CHAMBER LIGHTING IS PROVIDED BY A FIBER OPTIC LIGHTING SYSTEM. A DEDICATED 120VAC/15A OR 240VAC/10A ELECTRICAL CIRCUIT TERMINATING IN A QUAD RECEPTACLE OUTLET IS REQUIRED TO POWER THE LIGHTS AND OTHER ACCESSORY EQUIPMENT. IT IS RECOMMENDED THAT ONE OF THE RECEPTACLES BE CONNECTED TO A CONVENIENTLY LOCATED SWITCH TO CONTROL THE LIGHTS. BY OTHERS.

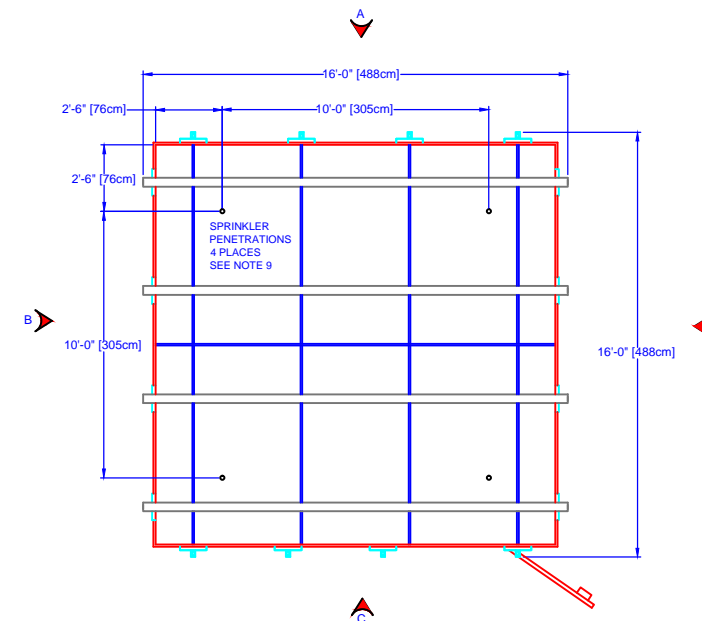
7. CHAMBER INTERNAL AC POWER IS PROVIDED THROUGH A LINE FILTER TO ENSURE ISOLATION AND SHIELDING. A 120VAC/20A OR 240VAC/10A DEDICATED CIRCUIT MUST BE CONNECTED TO THE FILTER. BY OTHERS.

HVAC:

8. HVAC VENTS ARE 12 IN SQUARE AND HAVE SHEET METAL FLANGES FOR ATTACHMENT OF DUCTING. EITHER VENT MAY BE USED FOR THE SUPPLY. DUCTING IS NOT REQUIRED FOR RETURN VENT. 70 - 100 CFM AIRFLOW IS SUFFICIENT FOR TEST CHAMBER. DUCT CONNECTION IS BY OTHERS.

FIRE PROTECTION:

9. SPRINKLER DROP PIPES AND HEADS ARE PRE-INSTALLED IN THE CHAMBER. A 1" NPTF PIPE NIPPLE EXTENDS THRU THE CHAMBER CEILING TO ALLOW CONNECTION OF EACH SPRINKLER TO THE HOST BUILDING FIRE PROTECTION SYSTEM. SPRINKLER CONNECTION IS BY OTHERS.



UNLESS OTHERWISE SPECIFIED DIMENSIONS ARE IN INCHES

TOLERANCES:

	DECIMAL	ANGULAR
X	±.050	±0.5°
XX	±.030	
XXX	±.010	

THIRD ANGLE PROJECTION

<b>THE HOWLAND COMPANY, INC.</b> 4540 Atwater Court, Suite 107 Buford, GA 30518 678-546-5680 www.thehowlandcompany.com					
TITLE 4800D WIRELESS TEST LAB FACILITY INTERFACE CONTROL DRAWING					
APVD DWN CWS	DATE DATE 3-21-13	SIZE D	CAGE CODE 5V978	DWG NO P0090629	REV 1 OF 1
DSGN CWS	DATE DATE 3-21-13	SCALE 1 : 40	SHEET		