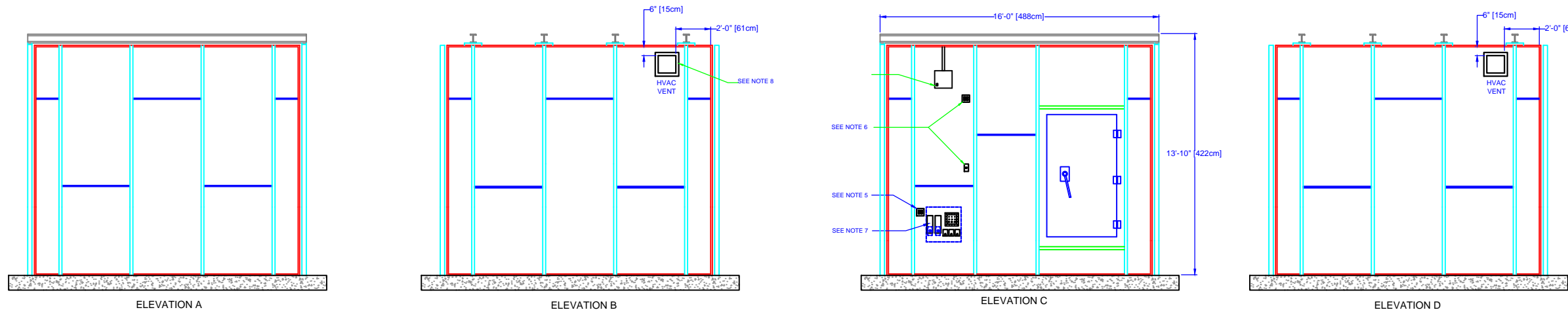


REVISION HISTORY

REV	DESCRIPTION	DATE	APPROVED



NOTES:

GENERAL:

1. TEST CHAMBER OUTSIDE DIMENSIONS ARE 192 X 192 X 166 IN HIGH (488 X 488 X 422 CM HIGH).
2. TEST CHAMBER IS A STAND-ALONE MODULAR SHIELDED CHAMBER LINED WITH RF ANECHOIC MATERIAL. TOTAL SYSTEM WEIGHT IS 15000 LB (6800 KG). MAXIMUM FLOOR LOAD IS 265 LB/SQ FT (1252 KG/SQ M).
3. FLOOR SURFACE BENEATH CHAMBER MUST BE SMOOTH AND FLAT TO WITHIN $\frac{1}{8}$ IN OVER 10 FT (3 MM OVER 3 M), NON-ACCUMULATING.

ELECTRICAL:

4. TEST CHAMBER MUST BE CONNECTED TO HOST BUILDING ELECTRICAL GROUND. A GROUNDING STUD IS PROVIDED WITH THE CHAMBER AND WILL BE FIELD INSTALLED AT A CONVENIENT LOCATION. CONNECTION TO ELECTRICAL SYSTEM IS BY OTHERS.

5. SYSTEM RF AND CONTROL CABLING IS ROUTED TO THE FRONT OF THE TEST CHAMBER. AN EQUIPMENT RACK OR TABLE IS REQUIRED TO SUPPORT THE SYSTEM CONTROLLER AND RF EQUIPMENT. A DEDICATED 120VAC/20A OR 240VAC/10A CIRCUIT TERMINATING IN A QUAD RECEPTACLE OUTLET IS REQUIRED TO POWER THIS EQUIPMENT. BY OTHERS.

6. CHAMBER LIGHTING IS PROVIDED BY A FIBER OPTIC LIGHTING SYSTEM. A DEDICATED 120VAC/15A OR 240VAC/10A ELECTRICAL CIRCUIT TERMINATING IN A QUAD RECEPTACLE OUTLET IS REQUIRED TO POWER THE LIGHTS AND OTHER ACCESSORY EQUIPMENT. IT IS RECOMMENDED THAT ONE OF THE RECEPTACLES BE CONNECTED TO A CONVENIENTLY LOCATED SWITCH TO CONTROL THE LIGHTS. BY OTHERS.

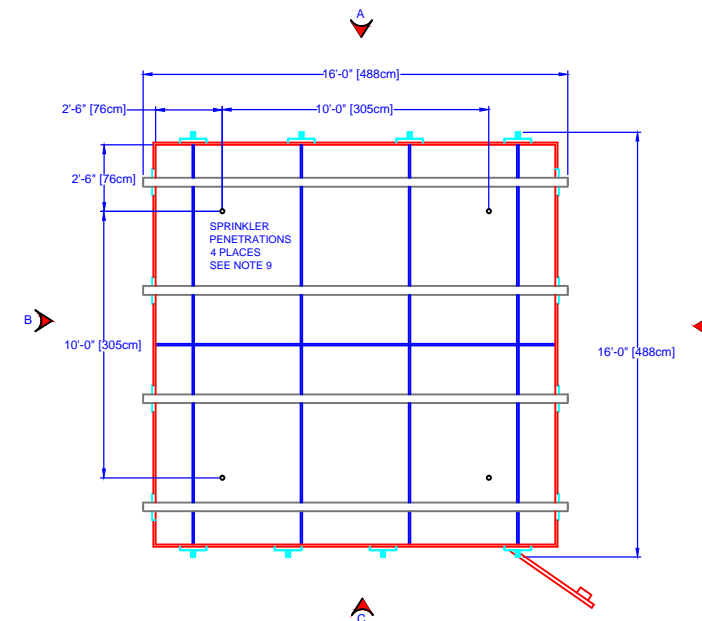
7. CHAMBER INTERNAL AC POWER IS PROVIDED THROUGH A LINE FILTER TO ENSURE ISOLATION AND SHIELDING. A 120VAC/20A OR 240VAC/10A DEDICATED CIRCUIT MUST BE CONNECTED TO THE FILTER. BY OTHERS.

HVAC:

8. HVAC VENTS ARE 12 IN SQUARE AND HAVE SHEET METAL FLANGES FOR ATTACHMENT OF DUCTING. EITHER VENT MAY BE USED FOR THE SUPPLY. DUCTING IS NOT REQUIRED FOR RETURN VENT. 70 - 100 CFM AIRFLOW IS SUFFICIENT FOR TEST CHAMBER. DUCT CONNECTION IS BY OTHERS.

FIRE PROTECTION:

9. SPRINKLER DROP PIPES AND HEADS ARE PRE-INSTALLED IN THE CHAMBER. A 1" NPTF PIPE NIPPLE EXTENDS THRU THE CHAMBER CEILING TO ALLOW CONNECTION OF EACH SPRINKLER TO THE HOST BUILDING FIRE PROTECTION SYSTEM. SPRINKLER CONNECTION IS BY OTHERS.



UNLESS OTHERWISE SPECIFIED DIMENSIONS ARE IN INCHES
 TOLERANCES:
 DECIMAL ANGULAR
 X ±.050 ±0.5°
 XX ±.030
 XXX ±.010

THIRD ANGLE PROJECTION

THE HOWLAND COMPANY, INC.
 4540 Atwater Court, Suite 107 Buford, GA 30518
 678-546-5680 www.thehowlandcompany.com

TITLE: 4100D WIRELESS TEST LAB
 FACILITY INTERFACE CONTROL DRAWING

APVD	DATE	SIZE	CAGE CODE	DWG NO	REV
DWN CWS	DATE 3-21-13	D	5V978	P0090630	
DSGN CWS	DATE 3-21-13	SCALE	1:40	SHEET	1 OF 1