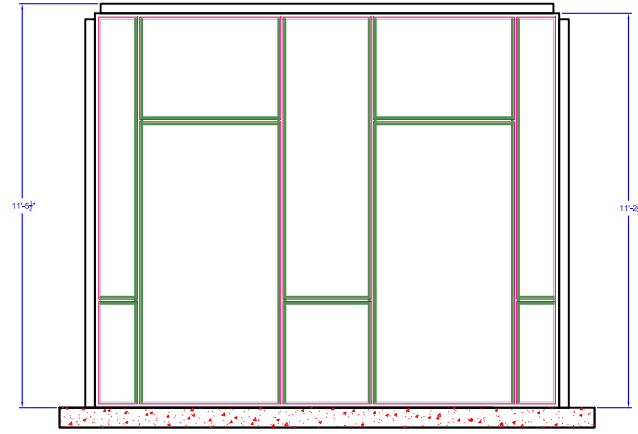


8 7 6 5 4 3 2 1

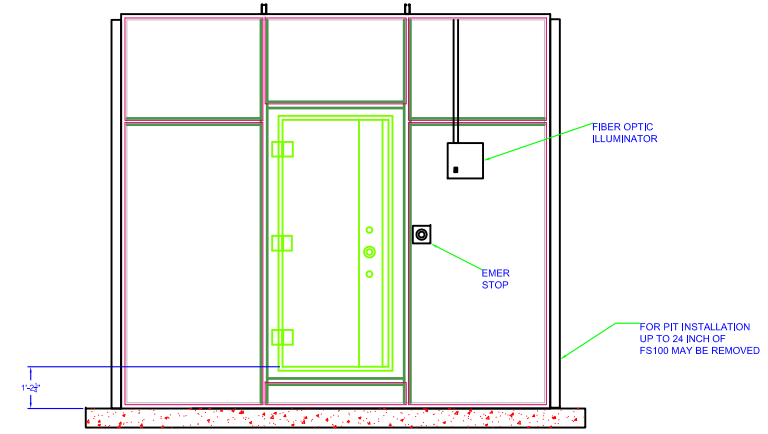
REVISION HISTORY			
REV	DESCRIPTION	DATE	APPROVED
A	MODIFY CHAMBER SIZE	11-22-2011	CWS
B	ADD DOOR SWING CALLOUT	12-1-2011	CWS

NOTES:

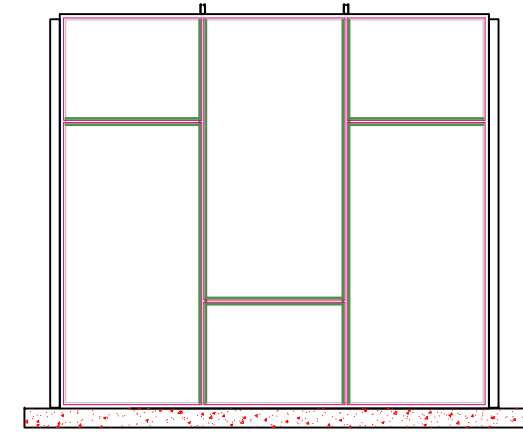
- TEST CHAMBER OUTSIDE DIMENSIONS IN INCHES ARE 153W X 165D X 138H (3.9 X 4.2 X 3.5 M).
- TEST CHAMBER IS A STAND-ALONE MODULAR SHIELDED CHAMBER LINED WITH RF ANECHOIC MATERIAL. TOTAL SYSTEM WEIGHT IS 7000 LB (3175 KG). MAXIMUM FLOOR LOAD IS 150 LB/SQ FT (732 KG/SQ M).
- FLOOR SURFACE BENEATH CHAMBER MUST BE SMOOTH AND FLAT TO WITHIN 1/8 IN OVER 10 FT (0.3 CM OVER 3 M).
- TEST CHAMBER MUST BE CONNECTED TO ELECTRICAL GROUND. A GROUNDING STUD IS PROVIDED WITH THE CHAMBER AND CAN BE FIELD INSTALLED AT A CONVENIENT LOCATION.
- HVAC SUPPLY/RETURN DUCTS ARE 12 IN (30.5 CM) SQUARE AND HAVE SHEET METAL FLANGES FOR ATTACHMENT OF DUCTING. DUCTING IS NOT REQUIRED FOR RETURN VENT. STANDARD OFFICE AIR SUPPLY VOLUME IS SUFFICIENT FOR TEST CHAMBER.
- A SHIELDED PENETRATION IS PROVIDED IN THE CHAMBER CEILING FOR CONNECTION OF FIRE PROTECTION SERVICES. THREAD SIZE IS 1" NPT.
- CHAMBER LIGHTING IS PROVIDED BY FIBER OPTIC LITE PIPES. THE LED ILLUMINATORS REQUIRE 120V/5A/1PH OR 240V/2.5A/1PH. ILLUMINATORS ARE SUPPLIED WITH 10 FT (3M) POWER CORDS FOR CONNECTION TO STANDARD RECEPTACLES.



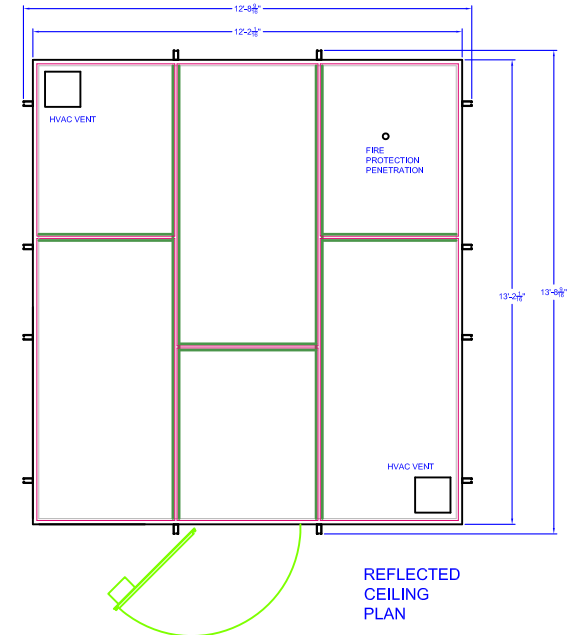
SIDEWALL ELEVATION



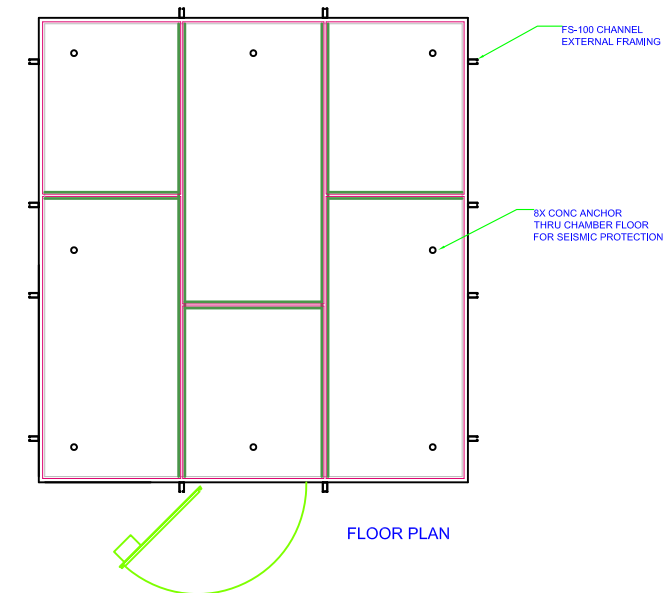
FRONTWALL ELEVATION



REARWALL ELEVATION



REFLECTED CEILING PLAN



FLOOR PLAN

HOWLAND PROPRIETARY

This document contains information proprietary to The Howland Company, Inc. Such information shall not be copied in whole or in part, published, disclosed to others, or used for any other purpose without the express written consent of The Howland Company.

APVD		DATE		SIZE	CAGE CODE	DWG NO	REV		
		DWN	CWS					DATE11-22-11	D
DSGN		CWS		DATE11-22-11		SCALE 3/8"=1'		SHEET 1 OF 1	

**THE HOWLAND COMPANY, INC.**  
 4540 Atwater Court, Suite 107 Buford, GA 30518  
 678-846-5680 www.atds-howland.com

TITLE  
 3500 WIRELESS TEST LAB  
 FACILITY INTERFACE CONTROL DRAWING  
 RIGHT HAND DOOR SWING

8 7 6 5 4 3 2 1